

Setup Fuser

STEP 1: SET UP YOUR FUSER

[DP]: Connect to the Main Display

[HDMI1]: Connect to the First-PC graphics card

[HDMI2]: Connect to the Second-PC graphics card

[DC12V]: Plug it into an outlet

STEP 2: SET UP DISPLAY SETTING ON WINDOWS

1. On the First-PC change windows display settings:

Change the hertz to the maximum that the fuser/main monitor supports

2. On the Second-PC change windows display settings:

Extended Display (Recommended)

Change the hertz to the maximum that the fuser/main monitor supports

SETUP DONE

Flashing Fuser

STEP 1: PREPARE YOUR SYSTEM

1. Plug in your USB-C cable into the Type-C port on your fuser, and plug the other end into your Second-PC

STEP 2: DOWNLOAD AND INSTALL

1. Download the USB Driver on the Second-PC

- Run it
- Click Install

2. Download Monitor Asset Manager on the Second-PC

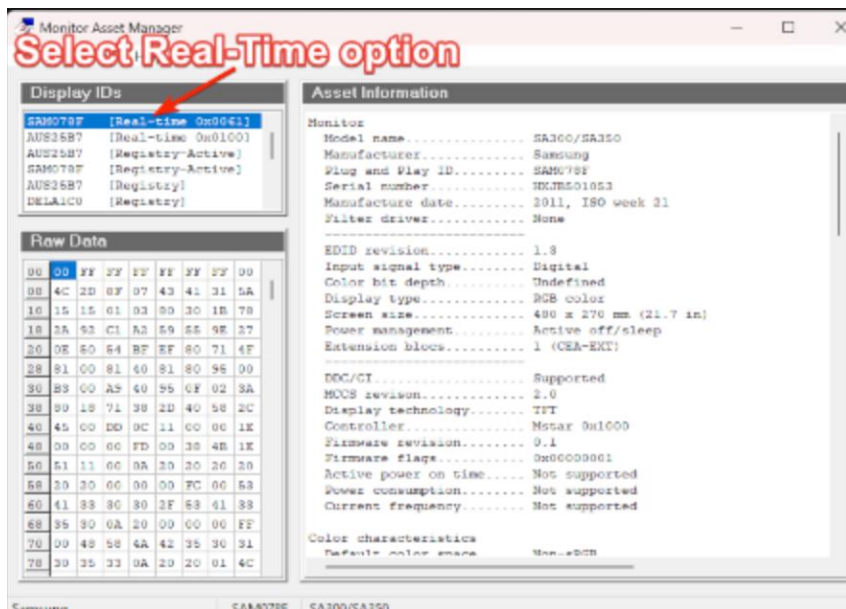
- Run It
- Click Install

3. Download FlashTool on the Second-PC

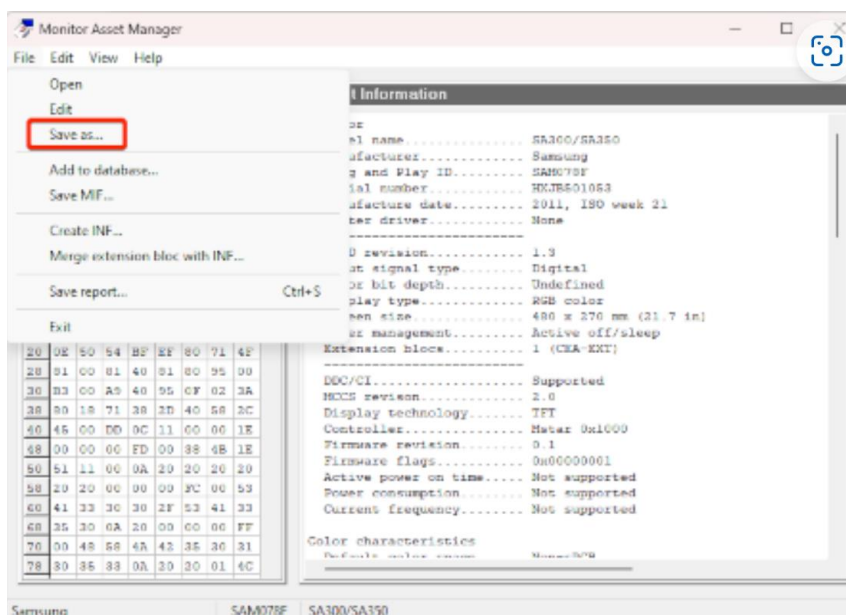
- Run It

STEP 3: EXTRACTING EDID FROM MAIN MONITOR

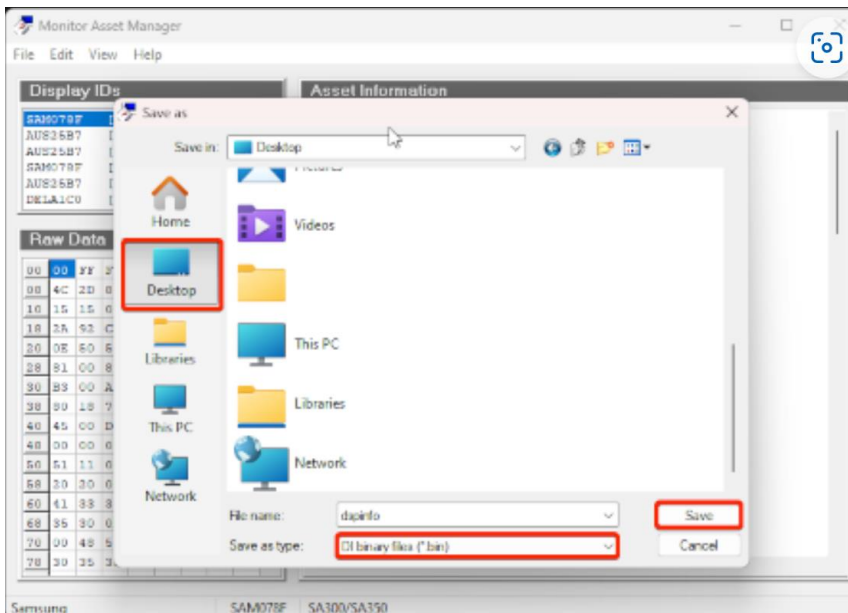
1. Connect the monitor you want to extract the EDID from to your Second-PC
- Attention** the monitor must be connected via HDMI cable and NOT display port
2. Open MonInfo.exe on the Second-PC
 3. Select the monitor from which the EDID will be extracted



4. Go to "File" -> "Save as..."

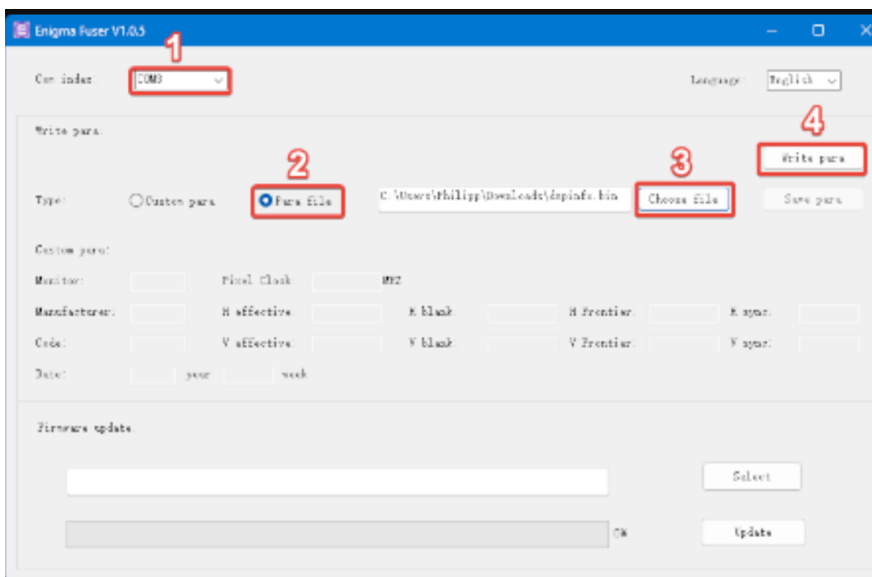


5. Save the dspinfo.bin to your desktop



STEP 4: FLASHING EDID INTO YOUR FUSER

1. Open EnigmaDPFuserFlashTool.exe



1. Select UART COM

2. Click on "Para file"

4. Click on "Choose file" and select your "dspinfo.bin" that you saved on your desktop in Step 3.5

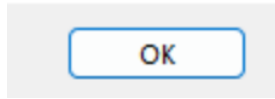
5. Click on "Write para" and wait for the process to complete. The screen may go black during injection. Once the injection is successful, a prompt will appear

2. After a successful injection, disconnect the Type-C cable

A popup like this means success



× cÈè²iÈý³É¹|



FLASH DONE